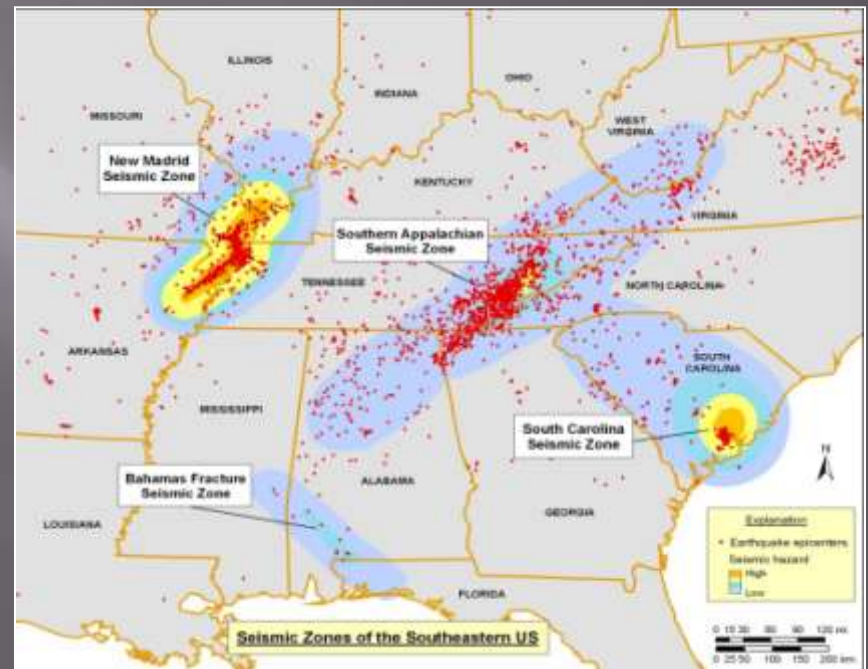


# NEHRP FUNDING

State of Alabama Emergency  
Management Agency  
Monique Smith

# Program Activities

- ❑ Evaluating potential moderate to large magnitude earthquakes in the East Tennessee Seismic Zone.
- ❑ Southeastern Tennessee, northeastern Tennessee, and northwestern Georgia
- ❑ Run earthquake scenarios into HAZUS
- ❑ Communicate with regional contacts to aid with the research



# Significant Program Accomplishments

- ▣ Contract was recently signed in March, 2013.
- ▣ Feb 2013 ShakeOut
  - Counties
  - CERT
  - VOAD



# Upcoming Plans/Initiatives

- ▣ Seismic history of earthquake potential for Southern Appalachian Seismic Zone
- ▣ Overview and maps of Hazus damage estimates from scenarios of potential events
- ▣ A compiled list of contact information for individuals, agencies, researchers, and planners interested in East Tennessee Seismic Zone earthquake research and planning



# Current Program Challenges or Limitations

- ▣ Being able to match NEHRP funds

# Questions

